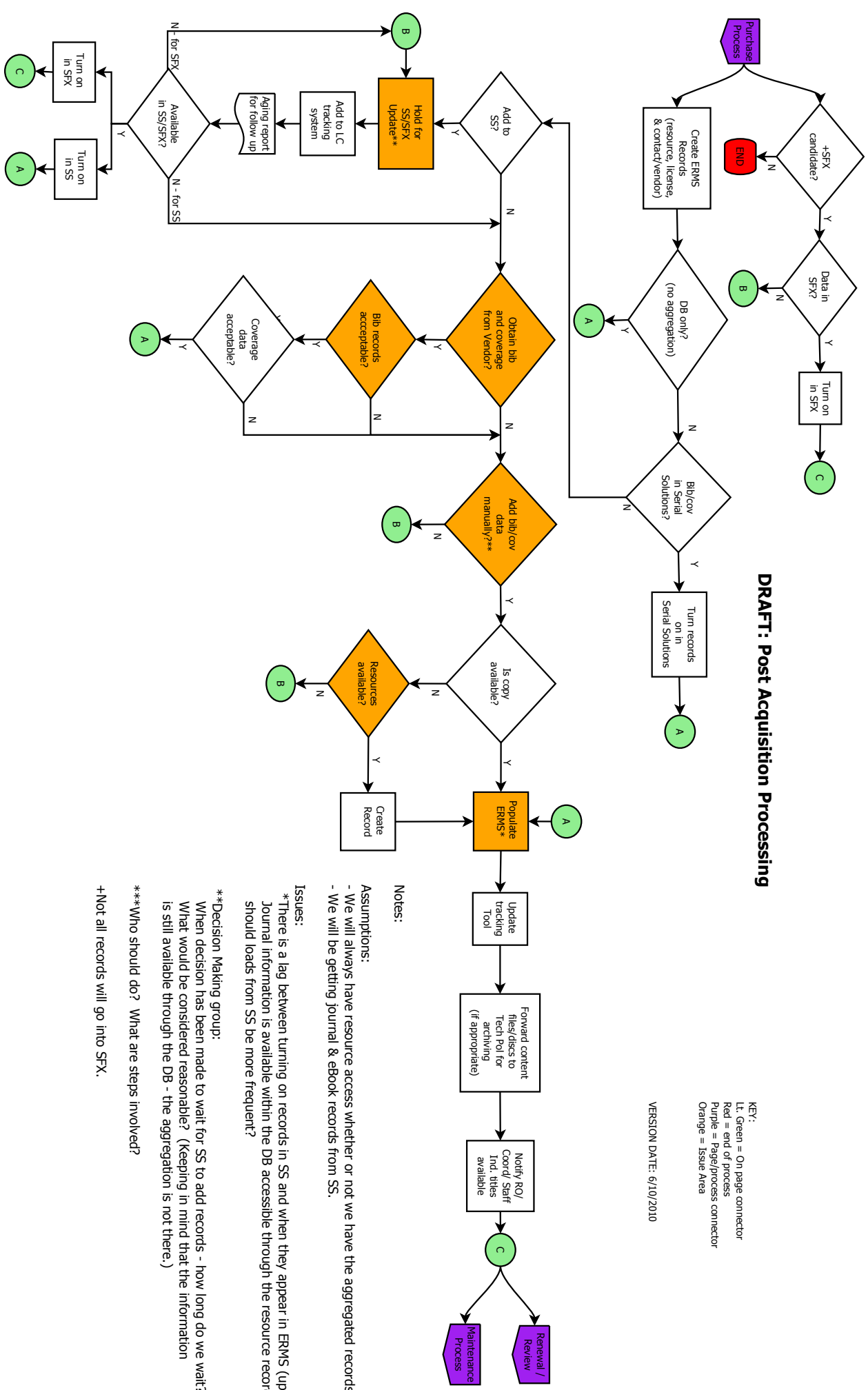


KEY:
 Lt. Green = On page connector
 Red = end of process
 Purple = Page/process connector
 Orange = Issue Area
 VERSION DATE: 6/10/2010

DRAFT: Post Acquisition Processing



Notes:
 Assumptions:
 - We will always have resource access whether or not we have the aggregated records in ERMS from SS.
 - We will be getting journal & eBook records from SS.

Issues:
 *There is a lag between turning on records in SS and when they appear in ERMS (up to 30 days)
 Journal information is available within the DB accessible through the resource record - should loads from SS be more frequent?

**Decision Making group:
 When decision has been made to wait for SS to add records - how long do we wait?
 What would be considered reasonable? (Keeping in mind that the information is still available through the DB - the aggregation is not there.)

***Who should do? What are steps involved?
 +Not all records will go into SFX.